



THE COTERIE THEATRE

Rudolph the Red-Nosed Reindeer The Musical

Rudolph and his friends, Clarice, Hermey the Elf, and Yukon Cornelius, learn what makes you different makes you special.

November 7 – December 31, 2023

Social Narrative

Sensory Friendly Performances

December 14th at 12pm & December 15th at 7pm

Created by The Coterie's Education Department

I am going to see
Rudolph the Red-Nosed Reindeer: The Musical
presented by actors at The Coterie Theatre.



This is what The Coterie looks like.

The actors have invited me to see
Rudolph the Red-Nosed Reindeer on a stage.
I'm so excited to see this play!



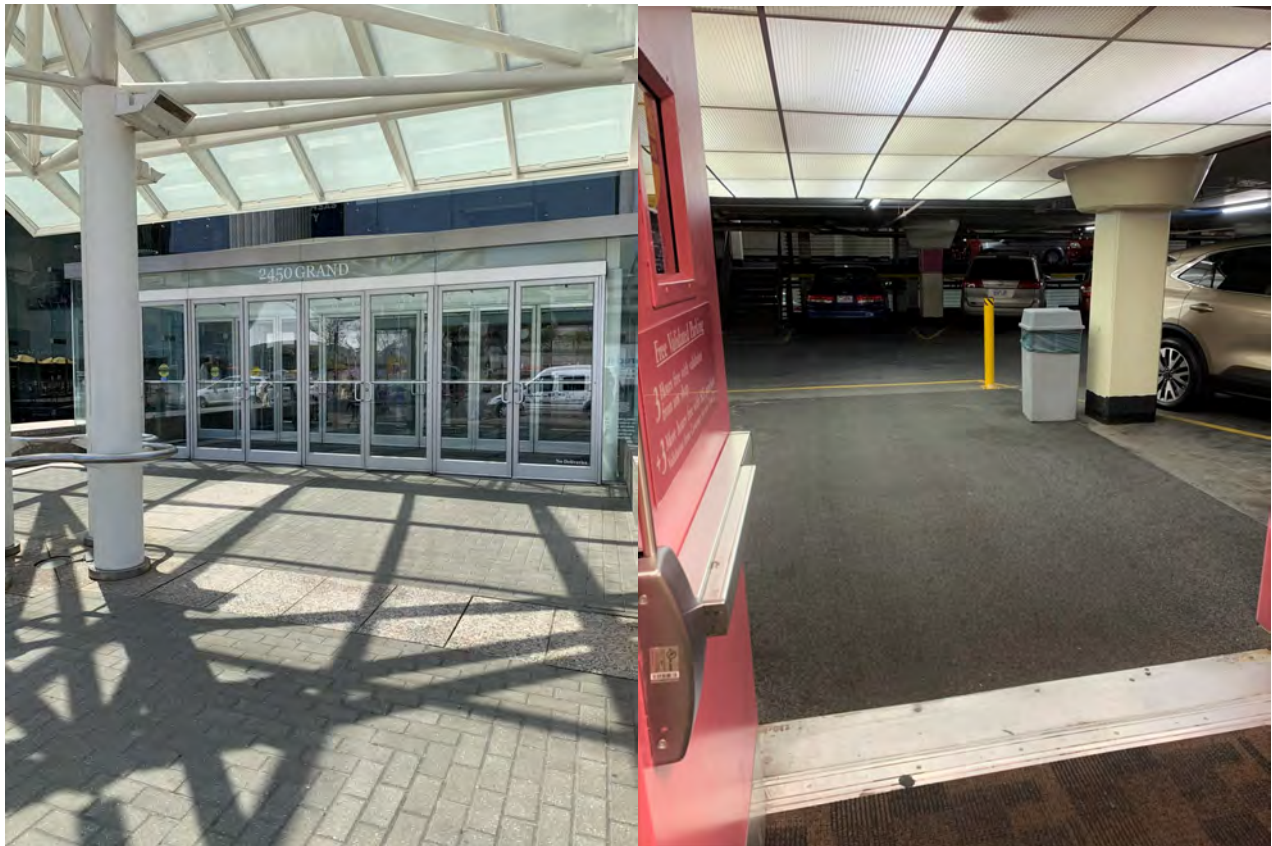
I am going to travel to The Coterie Theatre!

The Coterie is inside of Crown Center.



Crown Center is big.
It has places to shop, play, and to eat.

When I get to Crown Center, I might walk in from outside or I might walk in from the parking garage.



It might be loud in Crown Center. I can cover my ears or wear earphones. I might smell food cooking. I can cover my nose. I will be okay.

First, I will find The Coterie's lobby.



I might have to stand in line and wait for awhile to buy tickets or wait my turn to go inside the theater.

There are many different things to look at on the walls in the lobby.



I can see decorations for Rudolph's musical and posters for other shows!

Once I get checked in and it is my turn to go inside, a person called the House Manager will show me where to sit. I might sit on the floor or in a chair.



After we sit down, we will wait until everyone is ready to start the show.

If I need to use the restroom before the show,



...there are family restrooms in Crown Center by the escalators across from The Coterie.

On the stage, Rudolph and his friends might look different from the movie and the other stories.



The actors are wearing costumes and using puppets to pretend to be characters in the story.

When I see things I like or think are funny, I can clap my hands or laugh. Others may also clap their hands and laugh too.



I can cover my ears or wear earphones if it is too loud for me.

During the show, the actors sometimes may be loud as they blow whistles and yell on stage.



These sounds may be loud but none of these sounds can hurt me. If the noises get too loud, I can cover my ears or bring earphones to wear.

These moments will be modified for the Sensory Friendly Performance.

If a puppet I like is near me by the stage,



...I can look and wave at the puppet. I will keep my hands to myself.

In the show, we meet Bumble the Abominable Snowman. We hear him roar and see him frighten Rudolph and his friends.



The actors know that this puppet will not hurt them, but are pretending as part of the story.

Two actors called puppeteers move Bumble's head and arms on stage while we hear the growling sounds.



This puppet might be tall and loud but this puppet cannot hurt me. If the noises get too loud, I can cover my ears or bring earphones to wear.

If I need to take a break, I can ask an adult to go with me back out to the lobby.



We will find the exit sign and walk out of the theater.

Most often, the actors and puppets are on stage.
There are times when they walk, stand, and move
in the audience.



I might have to turn to see them, or they might be
standing very close to me. If they are close to me,
I know I am safe and they will not touch me.

I know the show is almost over when the actors bow.



It may be loud as people clap and cheer. If it is too loud for me I can cover my ears or wear earphones.

After the show is over, the lights will come back on and everyone will leave the theater.



The aisles may be crowded as everyone exits.
I will wait my turn to use the aisle and exit
through the doors.

At home I can tell my family or draw a picture,



...all about my friends from *Rudolph the Red-Nosed Reindeer: The Musical* at The Coterie!